

Georg Philipp Telemann (1681-1767)

Musique de Table (1733)

Production III: No. 5: Solo

Denkmäler deutscher Tonkunst: Volume LXII

Extraction of Parts and Realization of the Continuo by Charles-David Lehrer

1 **Largo.**

Bassoon

p

4

8

12

16

20

24

29 **Presto.**

f

36

43

50

The image displays a musical score for a Bassoon part. It begins with a 'Largo' section, marked with a '1' and a 'p' (piano) dynamic. The tempo changes to 'Presto' at measure 29, marked with an 'f' (forte) dynamic. The score is written in bass clef with a key signature of two flats (B-flat and E-flat). The time signature is 12/8 for the Largo section and common time (C) for the Presto section. The score is divided into measures, with measure numbers 1, 4, 8, 12, 16, 20, 24, 29, 36, 43, and 50 indicated. The music features a variety of note values, including eighth and sixteenth notes, and rests. The Presto section is characterized by a faster tempo and a more active melodic line.

57



64



70



77



84



90



97

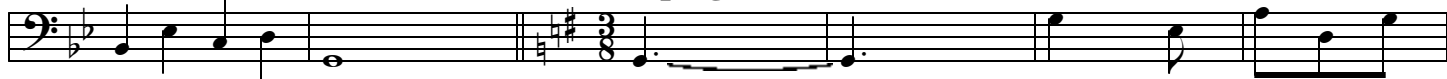


104



111

Tempo giusto.



p

117



124



131



138



145



152



159



166

Presto.

172



179



186



193



200



206



213

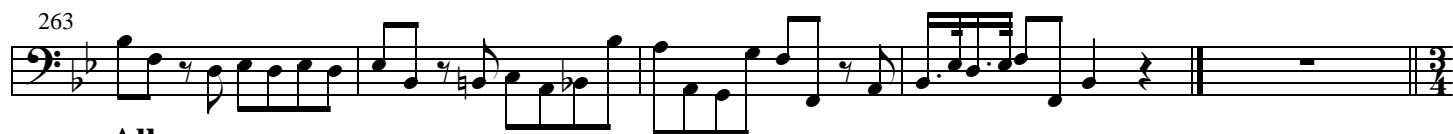
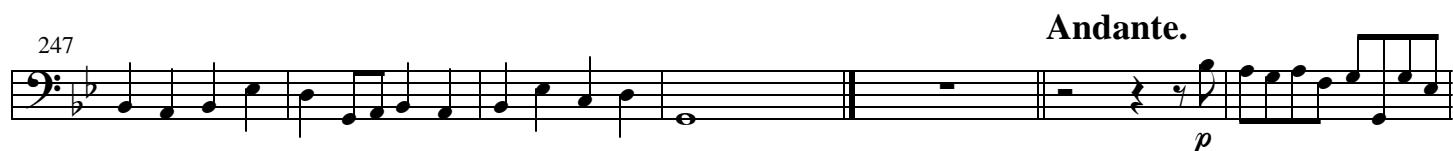


220



226





317

